

Pooch Quick Start

Requirements: Macintoshes running OS X 10.2* or later with proper connections to the Internet. (If the Macs are on an isolated network, manually configure their Network system preferences to use unique IP addresses from 192.168.1.1 to 192.168.1.254.)



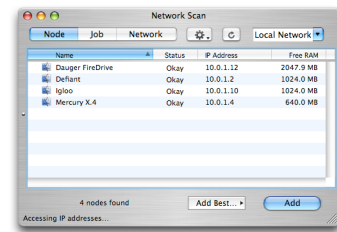
Installation: Double-click the Pooch Installer. Repeat for additional Macs on the same local area network.

Congratulations! You have just built for first parallel computer. Now to test it:

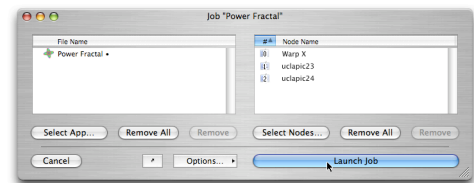
1. **Select a parallel application:** Download the Power Fractal app and drag it from the Finder to the Pooch icon in the Dock.



2. **Select nodes:** To add other nodes, click on Select Nodes... from the Job Window that just appeared to invoke the Network Scan window. Double-clicking on a node moves it to the node list of the Job window.



3. **Launch:** Click Launch Job in the Job window to start your parallel job. Pooch should be distributing the code and launching the parallel application.



Congratulations! You are now operating your first parallel computer.

*Also operates on OS 9

pooch@daugerresearch.com

<http://daugerresearch.com/pooch/>

Copyright ©2001-6 Dauger Research, Inc.